

ILLUSTRATED PARTS LIST

MAC

MODEL	TOP ASSEMBLY	SER.NO. PREFIX
60A	400016-04	11-
80A	400019-02	11-
60S	400028-02	11-, 12-, 13-
80S	400029-02	11-, 12-, 13-
85A	400029-06	12-
85A SPECIAL 85-S	400029-09	12-, 13-
P.S.I	400029-08	12-, 13-

EAGER BEAVER

I-S	400031-02	11-, 12-, 13-
I Special	400031-03	12-, 13-
II-S	400032-02	11-, 12-, 13-
III	400032-04	12-
III-SPECIAL III-S	400032-06	12-, 13-

McCulloch Chain Saws are identified by a model number (for example 400028) followed by a suffix number (02, 03 etc.). Suffix numbers denote variations in parts or assemblies used in the manufacture of this product.

Part numbers listed in this I.P.L. which have a circled number ① or numbers preceding the description, are used only on the model or models identified by a circled number ① or numbers.

Part numbers which have one or more dots (.) preceding their descriptions may be ordered individually, but they are also included in the kit or assembly whose description begins directly above the dot(s).

The policy of McCulloch Corporation is one of continual improvement in design, manufacturing and engineering advancement wherever possible to assure still finer power tools. Hence, specifications, equipment, colors, design and manufacturer's suggested list prices are subject to change without notice and McCulloch Corporation reserves the right to make such changes without prior notification or obligation to backfit or supply backfit components for units previously shipped from the factory.

McCULLOCH & EAGER BEAVER FLEX SHAFT

String Trimmers & Brush Cutters

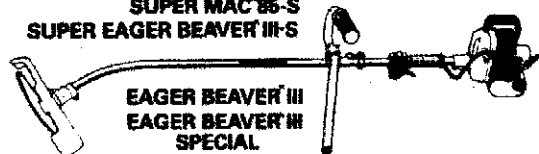
MAC[™] 60A
SUPER MAC[™] 60-S
SUPER EAGER BEAVER[™] I-S



PRO SCAPER[™]
MAC[™] 80A
SUPER MAC[™] 80-S
SUPER EAGER BEAVER[™] I SPECIAL
SUPER EAGER BEAVER[™] II-S



MAC[™] 85A
MAC[™] 85A SPECIAL
SUPER MAC[™] 85-S
SUPER EAGER BEAVER[™] III-S



EAGER BEAVER[™] III
EAGER BEAVER[™] III
SPECIAL

-CONTENTS

PAGE

FIGURE 1.	Drive Shaft/Shield/Cutter Assemblies	2
FIGURE 2.	Engine Assembly	4
FIGURE 3.	Carburetor Assemblies For String Trimmer Only	6
FIGURE 4.	Carburetor For String Trimmer/Brush Cutters Only	7
FIGURE 5.	Specifications	8
FIGURE 6.	Accessories & Replacement Parts	8

JUNE 1987


McCULLOCH
CORPORATION

© U.S.A. - McCulloch Corporation, 1987

Printed in U.S.A.

900 Lake Havasu Ave.
Lake Havasu City, AZ 86403-2891

218825-01
(Rev. A)

This IPL Supersedes and Replaces IPL 216925-R1, 218823, 218824, 218825 & 219298.

Figure 1 Drive Shaft / Shield / Cutter Assemblies

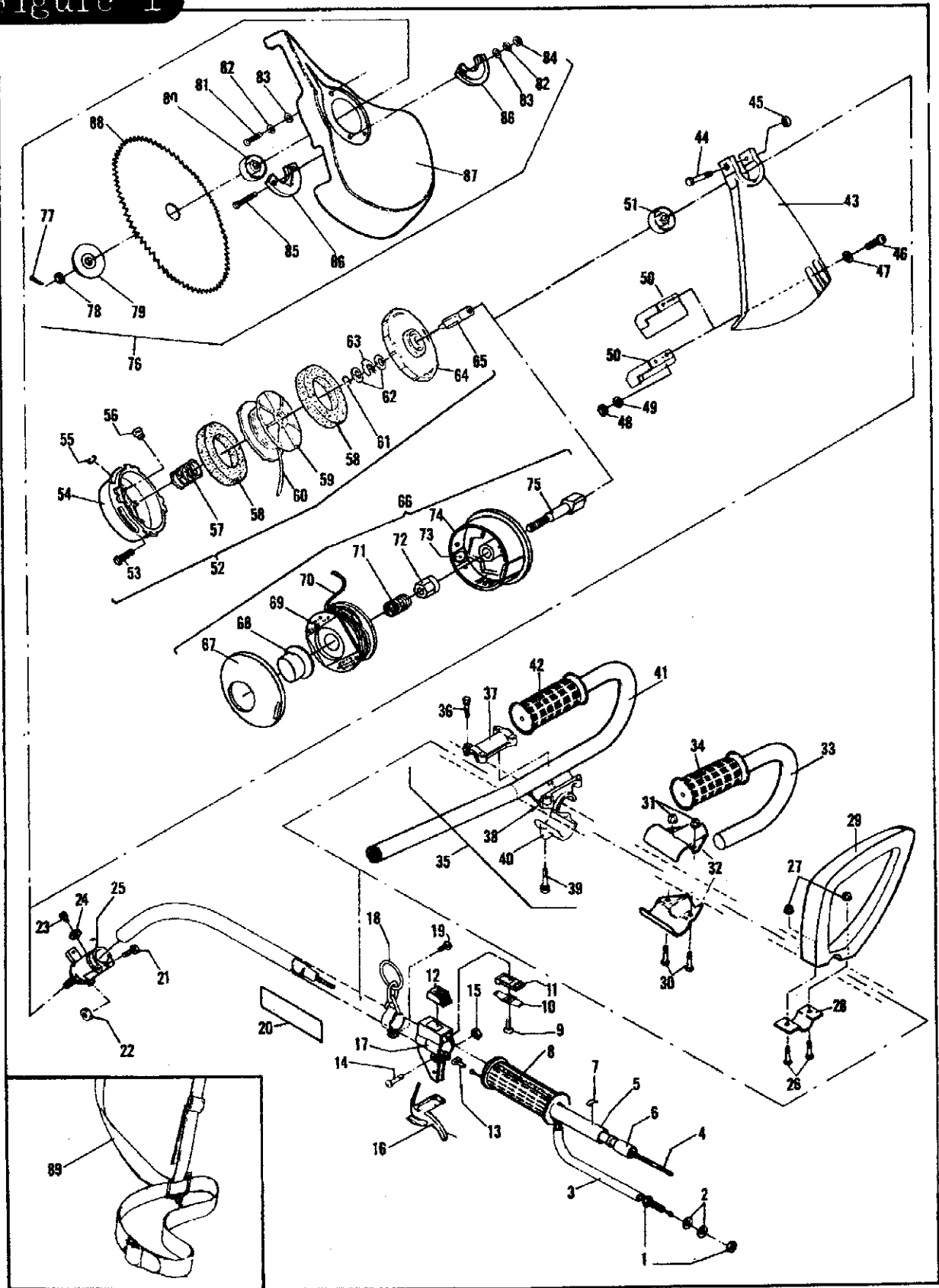


FIGURE 1 DRIVE SHAFT / SHIELD / CUTTER ASSEMBLIES

ITEM NO.	PART NUMBER	DESCRIPTION	UNITS PER ASY.
1	217403	Nut-Throttle Cable (18-26 inch pounds torque)	2
2	216596	Washer-Throttle Cable	2
3	① 217360	Cable-Throttle	1
	② 215306	Harness-Throttle Cable/Wire Assembly	1
4	③ 218285	Shaft-Flexible Drive 44"	1
	④ 215324	Shaft-Flexible Drive 48"	1
	⑤ 218326	Shaft-Flexible Drive 54"	1
5	⑥ 219561	Housing Asy-Outer 44"	1
	⑦ 217361	Housing Asy-Outer 48"	1
	⑧ 217362	Housing Asy-Outer 54"	1
6	⑨ 218282	.Sleeve (For 44" Shaft)	1
	⑩ 217366	.Sleeve (For 48" Shaft)	1
	⑪ 217367	.Sleeve (For 54" Shaft)	1
7	216603	Decal-Position	1
8	⑫ 218376	Grip-Solid Rubber	1
	⑬ 215322	Grip-Waffle Design	1
9	110706	Screw-Switch 8-18x.50	1
10	215320	Contact-Switch (Stop)	1
11	215319	Base-Switch (Stop)	1
12	⑭ 215323	Button-Switch (Stop)	1
13	215323	Guide-Throttle Cable	1
14	216027	Screw-Trigger Housing	1
15	217159	Nut-Trigger Housing	1
16	215318	Trigger-Throttle	1
17	⑮ 217337	Trigger Hsg W/O Switch Hole	1
	⑯ 215317	Trigger Hsg With Switch Hole	1
18	218001	Ring Asy-Harness	1
19	-- --	.Bolt-Ring	1
20	218295	Decal-Warning (For String Trimmer Only)	1
	219030	Decal-Warning (For String Trimmer/Brush Cutter Only)	1
21	217937	Screw-10-24x1	1
22	218315	Nut	1
23	215874	Screw-M4x9.5 Torx	1
24	217672	Washer-M4 Flat	1
25	218283	Spindle Asy (For Use With String Trimmer Only)	1
	⑰ 218241	Spindle Asy (For Use With String Trimmer/Brush Cutter Only)	1
26	120041	Screw-Delta Handle (18-26 inch pounds torque)	2
27	217159	Nut-Delta Handle M5	2
28	217442	Clamp-Delta Handle	1
29	217444	Handle-Delta	1
30	217935	Screw-"J" Handle (26-35 inch pounds torque)	2
31	218315	Nut-"J" Handle	2
32	215337	Clamp-"J" Handle	2
33	217856	"J" Handle/Grip Asy	1
34	94212	.Grip	1
35	218391	Clamp Asy-"J" Handle/Barrier Pole	1
36	-- --	.Screw-M5x.8 (26-35 inch pounds torque)	4
37	-- --	.Clamp-Top	1
38	-- --	.Clamp-Centerpiece	1
39	-- --	.Screw-M6x1 (44-52 inch pounds torque)	2
40	-- --	.Clamp-Bottom	1
41	218327	"J" Handle/Barrier/Grip Asy	1
42	94212	.Grip	1

ITEM NO.	PART NUMBER	DESCRIPTION	UNITS PER ASY.
43	217869	Shield-Grass	1
44	216595	.Screw-Shield	1
45	215871	.Nut-Shield (18-26 inch pounds torque)	1
46	217936	.Screw-Knife 10-25x.75	2
47	110582	.Washer-Flat	2
48	218315	.Nut-Hex	2
49	103174	.Washer-Lock	2
50	⑱ 218516	.Knife	1
	⑲ 216587	.Knife	1
51	218214	.Collar (For Use With String Head Only)	1
52	⑳ 217353	Head Asy-String-.080	1
	㉑ 216821	Head Asy-String-.095	1
53	218829	.Screw-Locking	1
54	217626-01	.Hub Assembly	1
55	217625	.Ring-Retaining	1
56	217624	.Eyelet	1
57	217622	.Spring-Compression	1
58	217619	.Pad-Foam	2
59	㉒ 217350	.Spool With 40Ft Of .080 Line	1
	㉓ 216820	.Spool With 30Ft Of .095 Line	1
60	㉔ 217696	.Line-40Ft (.080)	1
	㉕ 216898	.Line-40Ft (.095)	1
61	217618	.Ring-Retaining	1
62	217616	.Washer	2
63	217617	.Ring-Retaining	1
64	217615	.Plate-Rear	1
65	217614	.Drive-Adaptor	1
66	㉖ 219783	String Head With 15 Ft. Of .080 Line	1
	㉗ 219784	String Head With 12 Ft. Of .095 Line	1
67	219765	.Cover	1
68	219764	.Button-Bump Feed	1
69	㉘ 219785	.Spool With 15 Ft. Of .080 Line	1
	㉙ 219786	.Spool With 12 Ft. Of .095 Line	1
70	㉚ 219787	.Line-15Ft (.080)	1
	㉛ 219788	.Line-12Ft (.095)	1
71	219761	.Spring	1
72	219760	.Nut	1
73	219759	.Eyelet	2
74	219758	.Housing	1
75	219757	.Drive-Adaptor	1
76	⑳ 218200	Kit-Blade Guard	1
77	㉜ 218159	.Pin-Cotter	1
78	㉝ 218330	.Nut-Locking	1
79	㉞ 218075	.Flange	1
80	㉟ 218094	.Collar (For Use With Blade Only)	1
81	㊱ 217935	.Screw-10-24x.50 Torx (18-26 inch pounds torque)	1
82	㉞ 103174	.Washer-Lock	3
83	㉟ 110582	.Washer-Flat	3
84	㊲ 218315	.Nut	2
85	㊳ 217936	.Screw-10-24x.75 Torx (18-26 inch pounds torque)	2
86	㊴ 218165	.Clamp-Guard	2
87	㊵ 218329	.Guard-Blade	1
88	㊶ 216514	Blade-Metal 80 Tooth	1
89	218158	Harness	1

① Used on Super Mac 60-S and Super Eager Beaver I-S.

② Used on all models except Super Mac 60-S and Super Eager Beaver I-S.

③ 44" is used on 12 Level Eager Beaver™ I, Eager Beaver™ I Super and Mac™ 60A as well as 13 Level Super Mac™ 60-S and Super Eager Beaver™ I-S.

④ 48" is used on 11 Level Mac™ 60A, Mac™ 80A and Eager Beaver™ I, as well as 12 Level Mac™ 80A and Eager Beaver™ II. Also used on 13 Level Super Mac™ 80-S, Super Eager Beaver™ I Special and Super Eager Beaver™ II-S.

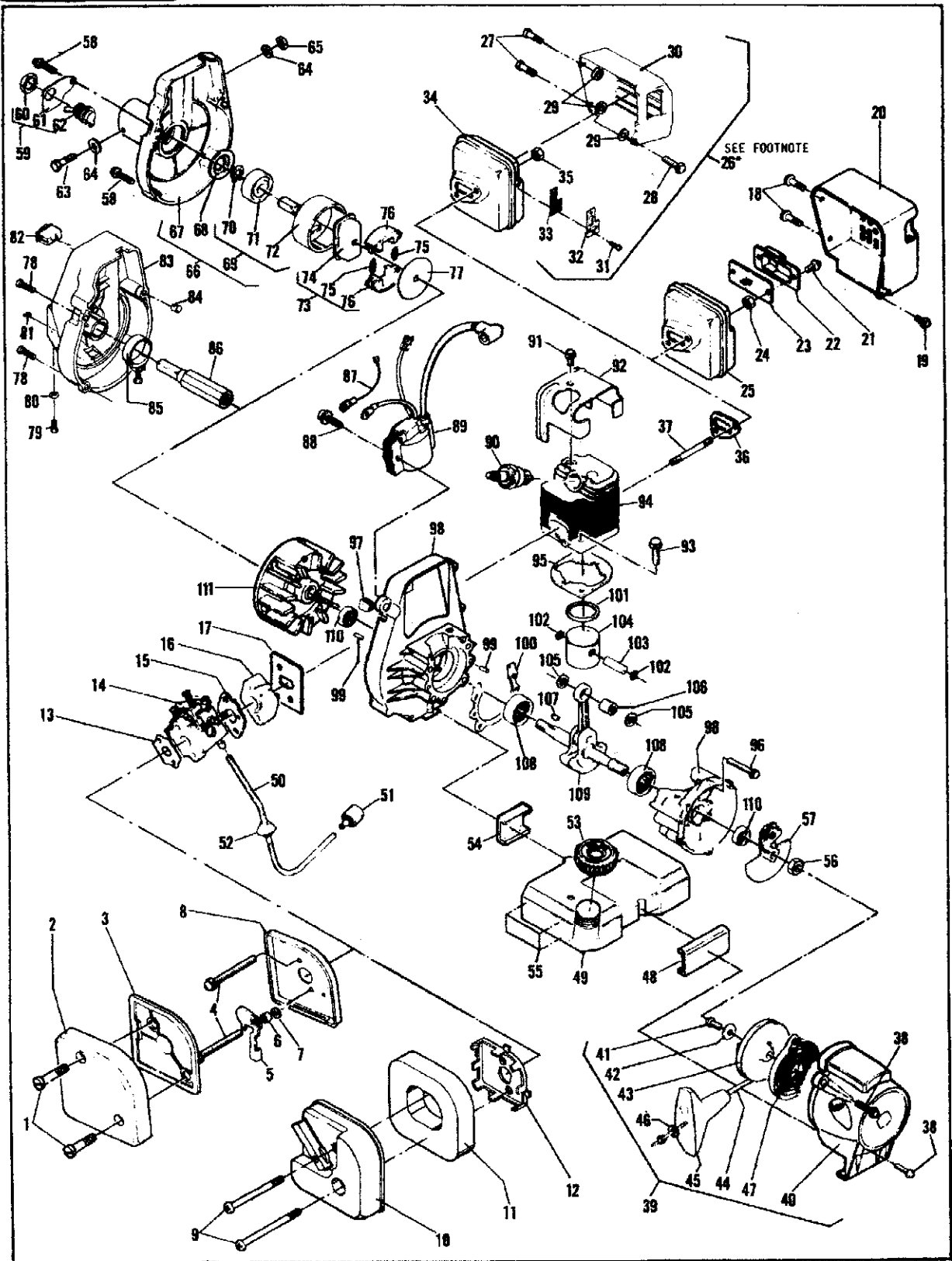
⑤ 54" is used on 11 Level Mac™ 80A (extended reach), Pro Scaper™ I and Eager Beaver™ II as well as 12 Level Mac™ 85A, Mac™ 85A Special, Eager Beaver™ III and Eager Beaver™ III Special. Also used on 13 Level Super Mac™ 85-S and Super Eager Beaver™ III-S.

CAUTION

⑥ May be used ONLY on units originally manufactured by the Factory as String Trimmer/Brush Cutters.

Figure 2

ENGINE ASSEMBLY



* NOTE: (Item 26)

This Kit may also be used on units originally equipped with a Plastic Muffler Shield with one exception. No Spacer is used at the Starter Mounting Hole.

FIGURE 2 ENGINE ASSEMBLY

ITEM NO.	PART NUMBER	DESCRIPTION	UNITS PER ASY.
1	217669	Screw-Air Filter Cover (6-9 inch pound torque)	2
2	215988	Cover-Air Filter	1
3	217376	Filter-Air	1
4	216903	Screw-Carburetor M5x55 (18-25 inch pounds torque)	2
5	215991	Shutter-Choke	1
6	215993	Spacer-Shutter	1
7	216591	Washer-Flat M5	1
8	216108	Airbox/Grommet Asy	1
9	219078	Screw-Choke Cover (18-23 inch pounds torque)	2
10	219098	Cover Assembly-Choke	1
11	219145	Filter-Air (foam)	1
12	219144	Box-Air	1
13	216226	Gasket-Air Box/Carburetor	1
14	Fig 3, 4	Carburetor	1
15	218933	Gasket-Carb./Insulator	1
16	219070	Insulator-Carb./C'Case	1
17	216575	Gasket-Insulator/C'Case	1
18	216025	Screw-Muffler Shield M4x8 (13-15 inch pounds torque)	2
19	* 216022	Screw-Muffler Shield (13-15 inch pounds torque)	1
20	ⓐ -- --	Shield-Muffler (Flocked)	1
21	216025	Screw-Spark Arrester Cover (12-16 inch pounds torque)	2
22	217318	Cover-Spark Arrester Screen	1
23	215516	Screen-Spark Arrester	1
24	217275	Nut-Flange M5 (41-51 inch pounds torque)	2
25	215506	Muffler Assembly	1
26	ⓑ 219963	Kit Muffler/Shield Asy	1
27	219508	Screw-Muffler Shield (13-15 inch pounds torque)	2
28	* 217669	Screw-Shield/Starter (12-16 inch pounds torque)	1
29	219079	Spacer-Muffler	3
30	218962	Shield-Muffler (Plastic)	1
31	219194	Screw-Spark Arrester Cover (12-16 inch pounds torque)	2
32	219150	Cover-Spark Arrester Screen	1
33	219149	Screen-Spark Arrester	1
34	219152	Muffler Assembly	1
35	217275	Nut-Muffler M5 (41-50 inch pounds torque)	2
36	215515	Gasket-Muffler	1
37	215517	Stud-Muffler/Cylinder	2
38	* 216022	Screw-Starter (13-15 inch pounds torque)	2
39	ⓐ 217388	Starter Assembly	1
40	ⓑ 219590	Starter Assembly	1
41	217389	Housing/Guide Asy	1
42	215590	Screw-Drum M4x9.50 (18-21 inch pounds torque)	1
43	216092	Washer-M4 Flat	1
44	216092	Drum/Rope Asy.	1
45	216093	Rope-Starter	1
46	216792	Handle-Starter	1
47	218941	Washer-Nylon	1
48	217482	Spring-Starter	1
49	217382	Cushion-Starter/Fuel Tank	1
50	217387	Fuel Tank/Hose Asy.	1
51	217264	Hose-Fuel	1
52	216985	Pickup-Fuel	1
53	215495	Grommet	1
54	216346	Cap-Fuel	1
55	217390	Cushion-C'Case/Fuel Tank	1
56	217383	Decal-40.1	1
57	216583	Nut-Starter Ratchet (149-176 inch pounds torque)	1
	215525	Ratchet Asy. (Hand Tighten Only)	1

ⓐ If this Airbox to Carburetor Gasket was not originally installed on your unit by the factory, it is not required.

ⓑ The Flocked Muffler Shield is no longer available. Should you need a replacement Shield, you must order item number 26 which includes a new Muffler and Shield.

ⓑ Starter Assembly #217388 includes three Metal Sleeves (one long and two short) and is used ONLY with the Plastic

ITEM NO.	PART NUMBER	DESCRIPTION	UNITS PER ASY.
58	213177	Screw-Fan Hsg. M4x18.50	4
59	219279	Switch/Plate Asy.	1
60	104810	Nut-Switch	1
61	217381	Plate-Switch	1
62	217648	Switch-Toggle	1
63	217158	Screw-Fan Hsg./Drive Shaft	2
64	216591	Washer-Flat M5	1
65	217159	Nut-Hex M5 (35-43 inch pounds torque)	1
66	218057	Housing Asy-Fan	1
67	217533	Housing-Fan	1
68	215534	Plate-Thrust	1
69	218065	Drum Asy-Clutch	1
70	213186	Ring-Retaining	1
71	213187	Bearing-Ball	1
72	218063	Drum-Clutch	1
73	216060	Clutch Assembly	1
74	215536	Rotor-Clutch	1
75	215537	Spring-Clutch	2
76	-- --	Shoe-Clutch	2
77	215539	Plate-Side	1
78	219508	Screw-Fan Housing	4
79	215874	Screw-Drive Shaft Locating (9,8-12.5 In. Lb. Torque)	1
80	217672	Washer	1
81	219558	Nut-Square	1
82	218648	Switch	1
83	219595	Housing-Fan (W/Switch Hole)	1
	219596	Housing-Fan (W/O Switch Hole)	1
84	219024	Spacer-Fan Housing	4
85	219025	Clamp-Fan Hsg./Drive Shaft (25-30 In. Lb. Torque)	1
86	217477	Coupling	1
87	218649	Wire Asy-Ground	1
88	213177	Screw-Ignition (12-16 inch pounds torque)	2
89	ⓐ 217439	Ignition-Mabash	1
90	62345	Spark Plug (105-130 inch pounds torque)	1
91	213178	Screw-Cylinder Cover (15-25 inch pounds torque)	1
92	215540	Cover-Cylinder	1
93	217320	Screw-Cylinder M6x18 (70-80 inch pounds torque)	2
94	217296	Cylinder	1
95	215542	Gasket-Cylinder/C'Case	1
96	213179	Screw-C'Case Halves (35-40 inch pounds torque)	4
97	215541	Grommet	1
98	ⓑ 217373	Crankcase Asy.	1
	ⓑ 218185	Crankcase Asy.	1
99	213191	Pin	4
100	215545	Gasket-Crankcase	1
101	217475	Ring-Piston	1
102	ⓐ 216343	Ring-Snap	2
	ⓑ 111026	Ring-Snap	2
103	ⓐ 215551	Pin-Wrist	1
	ⓑ 218275	Pin-Wrist	1
104	ⓐ 217295	Piston	1
	ⓑ 218273	Piston	1
105	ⓐ 213196	Washer	2
106	ⓑ 213195	Bearing-Piston Pin	1
	ⓑ 110984	Bearing-Piston Pin	1
107	ⓐ 102164	Key-Flywheel	1
108	ⓐ 216143	Bearing-C' Shaft (Ball)	2
	ⓑ 213282	Bearing-C' Shaft (Roller)	2
109	ⓐ 216444	Crankshaft/Con Rod Asy.	1
	ⓑ 218106	Crankshaft/Con Rod Asy.	1
110	ⓐ 216500	Seal-Crankshaft	2
	ⓑ 83859	Seal-Crankshaft	2
111	ⓐ 217378	Flywheel Asy.	1

Muffler Shield (item number 30). ONLY the long sleeve (P/N 219964) is available from service.

ⓐ To be used ONLY on units equipped with a Flocked metal Muffler Shield.

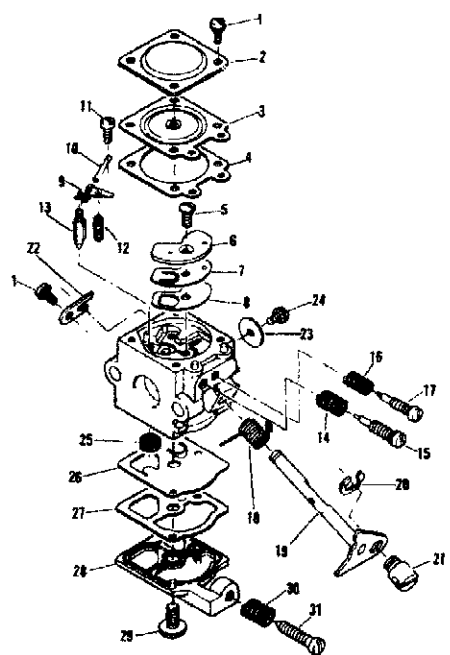
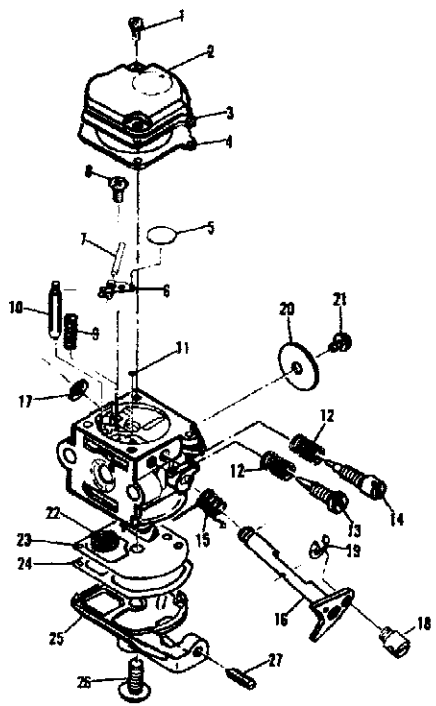
ⓑ See Service Notes.

ⓐ Used on 11 Level Models only.

ⓑ Used on all 12 & 13 Level Models.

* Location of 3 Starter Housing Fasteners

Figure 3 CARBURETOR ASSEMBLIES



ITEM NO.	PART NUMBER	DESCRIPTION	UNITS PER ASY.
	215494-01	① CARBURETOR ASY. (ZAMA C1S-MB)	
1	-- ②③	SCREW - COVER	2
2	-- --	CAP - MAIN	1
3	-- ②③	DIAPHRAGM - MAIN	1
4	-- ②③	GASKET - MAIN	1
5	-- ②③	DISK	1
6	-- ②③	ARM - NEEDLE VALVE	1
7	-- ②③	PIN - ARM	1
8	-- ②③	SCREW - PIN	1
9	-- ②③	SPRING - ARM	1
10	-- ②③	VALVE - NEEDLE	1
11	-- ②③	PLUG - WELCH	1
12	-- ②	SPRING - NEEDLE	2
13	-- ②	NEEDLE - HIGH SPEED	1
14	-- ②	NEEDLE - IDLE	1
15	-- --	SPRING - THROTTLE RETURN	1
16	-- --	SHAFT ASSEMBLY - THROTTLE	1
17	-- ②	"E" RING	1
18	-- ②	POST	1
19	-- ②	"E" RING	1
20	-- --	VALVE - THROTTLE	1
21	-- --	SCREW - THROTTLE VALVE	1
22	-- ②③	STRAINER	1
23	-- ②③	DIAPHRAGM - FUEL PUMP	1
24	-- ②③	GASKET - PUMP	1
25	-- --	COVER - FUEL PUMP	1
26	-- ②③	SCREW - PUMP COVER	1
27	-- --	SCREW - IDLE ADJUSTING	1

ITEM NO.	PART NUMBER	DESCRIPTION	UNITS PER ASY.
	215494	① CARBURETOR (WA-146)	1
1	-- --	SCREW - COVER	1
2	-- --	COVER - DIAPHRAGM	1
3	-- ②③	DIAPHRAGM - METERING	1
4	-- ②③	GASKET - DIAPHRAGM	1
5	-- ②	SCREW - CIRCUIT PLATE	1
6	-- --	PLATE - CIRCUIT	1
7	-- ②③	DIAPHRAGM - CIRCUIT PLATE	1
8	-- ②③	GASKET - CIRCUIT PLATE	1
9	-- ②③	LEVER - METERING	1
10	-- ②③	PIN - LEVER	1
11	-- ②③	SCREW - LEVER PIN	1
12	-- ②③	SPRING - LEVER	1
13	-- ②③	VALVE - INLET NEEDLE	1
14	-- ②	SPRING - HIGH SPEED NEEDLE	1
15	-- ②	NEEDLE - HIGH SPEED	1
16	-- ②	SPRING - IDLE NEEDLE	1
17	-- ②	NEEDLE - IDLE	1
18	-- ②	SPRING - THROTTLE RETURN	1
19	-- --	SHAFT - THROTTLE	1
20	-- --	CLIP	1
21	-- --	SWIVEL	1
22	-- --	CLIP - THROTTLE SHAFT	1
23	-- --	VALVE - THROTTLE	1
24	-- ②	SCREW - THROTTLE VALVE	1
25	-- ②③	SCREEN - INLET	1
26	-- ②③	DIAPHRAGM - FUEL PUMP	1
27	-- ②③	GASKET - FUEL PUMP	1
28	-- --	COVER - FUEL PUMP	1
29	-- --	SCREW - PUMP COVER	1
30	-- --	SPRING - IDLE SCREW	1
31	-- --	SCREW - IDLE ADJUSTING	1

① One of two (2) Carburetors used alternately on String Trimmers only. Identify Model Carburetor used before ordering repair kits.

② Contained in Major Repair Kit, P/N 218071.

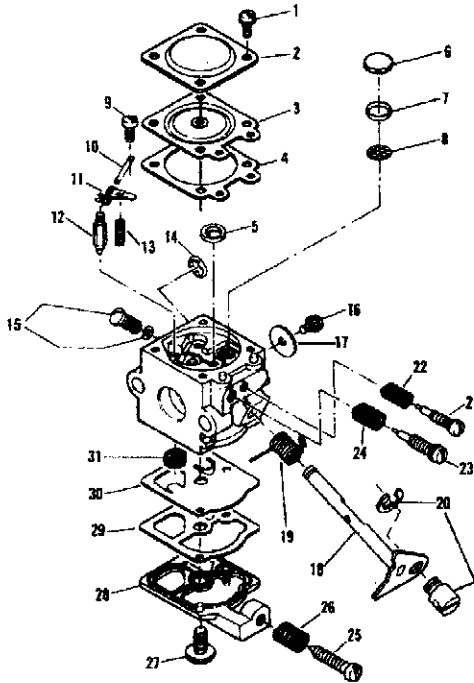
③ Contained in Minor Repair Kit, P/N 218073.

① One of two (2) Carburetors used alternately on String Trimmers only. Identify Model Carburetor used before ordering repair kits.

② Contained in Major Repair Kit, P/N 217111.

③ Contained in Minor Repair Kit, P/N 217110.

CARBURETOR ASSEMBLY Figure 4



- ① Used ONLY on String Trimmer/Brush Cutters.
- ② Contained in Repair Kit, P/N 218981.
- ③ Contained in Gasket/Diaphragm Kit, P/N 218982.

ITEM NO.	PART NUMBER	DESCRIPTION	UNITS PER ASY.
1	218169 ①	Carburetor - Walbro WT-37	1
2	--- ②	Screw - Metering Cover	4
3	--- ③	Cover - Metering Diaphragm	1
4	--- ④	Diaphragm - Ass'y Metering	1
5	--- ⑤	Gasket - Metering Diaphragm	1
6	--- ⑥	Plug - Welch	1
7	--- ⑦	Plug - Welch	1
8	--- ⑧	Ring - Screen Retainer	1
9	--- ⑨	Screen - Check Valve	1
10	--- ⑩	Screw - Metering Lever Pin	1
11	--- ⑪	Pin - Metering Lever	1
12	--- ⑫	Lever - Metering	1
13	--- ⑬	Valve - Inlet Needle	1
14	--- ⑭	Spring - Metering Lever	1
15	--- ⑮	Ring - Throttle Shaft	1
16	--- ⑯	Governor - Check Valve	1
17	--- ⑰	Screw - Shutters	2
18	--- ⑱	Shutter - Throttle	1
19	--- ⑲	Shaft - Assembly Throttle	1
20	--- ⑳	Spring - Throttle Return	1
21	--- ㉑	Swivel Assembly	1
22	--- ㉒	Needle - Idle	1
23	--- ㉓	Spring - Needle Idle	1
24	--- ㉔	Spring - High	1
25	--- ㉕	Spring - Needle (high)	1
26	--- ㉖	Spring - Idle Adjust	1
27	--- ㉗	Spring - Idle Screw	1
28	--- ㉘	Screw - Pump Cover	1
29	--- ㉙	Cover - Fuel Pump	1
30	--- ㉚	Gasket - Fuel Pump	1
31	--- ㉛	Diaphragm - Fuel Pump	1
31	--- ㉜	Screen - Fuel Inlet	1

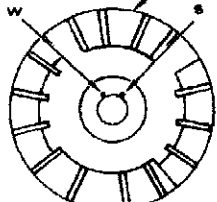
LUBRICANTS

	PART NUMBER
Case 6-Ounce Cans	93770
Case 16-Ounce Cans	85707
Case 1 Quart Bottles.....	85709

SERVICE NOTE:

Only the WABASH Ignition is currently available as service replacement.

TWO KEYWAY FLYWHEEL

Ignition Identification			MAGNET 
TYPE	COLOR	KEYWAY	
WABASH	Orange	W	
*SEMS (AM 31)	Black	S	
*SEMS (AM 32)	Black	W	

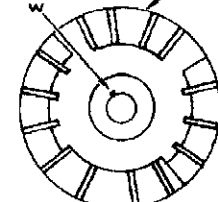
*Ignition type stamped on face below lamination coil.

NOTE:

WABASH and SEMS (AM 32) Ignition systems are interchangeable and each Ignition uses the identical keyway.

When replacing SEMS (AM 31) with WABASH Ignition, the flywheel **MUST** be removed and turned using the keyway with the letter W (WABASH).

SINGLE KEYWAY FLYWHEEL

Ignition Identification			MAGNET 
TYPE	COLOR	KEYWAY	
WABASH	Orange	W	
*SEMS (AM 32)	Black	W	

*Ignition type stamped on face below lamination coil.

NOTE:

WABASH and SEMS (AM 32) Ignition systems are interchangeable and each Ignition uses the identical keyway.

Figure 5

SPECIFICATIONS

ENGINE TYPE	Air-cooled, two-cycle, single cylinder
BORE	1.268 inches (32.21mm)
STROKE	1.023 inches (26mm)
DISPLACEMENT	1.29 cubic inches (21.2cc)
SPARK PLUG GAP025 inches (.63mm)
GASOLINE	Regular Grade leaded or unleaded
OIL RECOMMENDED	McCulloch Custom Lubricant
GASOLINE/OIL RATIO	40:1 Using McCulloch Custom Lubricant 20:1 Using SAE 40 Two-Cycle Oil
FUEL CAPACITY	16.9 Fl. oz.
RUNNING TIME	35 to 45 minutes
IGNITION	Electronic
LAMINATION TO FLYWHEEL AIR GAP010 inches (2.5mm)

Figure 6

ACCESSORIES & REPLACEMENT PARTS

STRING TRIMMER AND BRUSH CUTTER		ACCESSORIES & REPLACEMENT PARTS										
		ACCESSORIES* LIST	PART NUMBER	SUPER MAC 80-S	SUPER MAC 80-S	SUPER MAC 85-S	ELDER BEATER 1-S	ELDER BEATER 1-S	ELDER BEATER 1-S	ELDER BEATER 1-S	ELDER BEATER 1-S	ELDER BEATER 1-S
Semi-Auto Head .080	219783	•										
15' Line .080	219787	•										
15' Line on Spool .080	219785	•										
1-Lb. Bulk Line .080	217351-01	•										
5-Lb. Bulk Line .080	217352-01	•										
Semi-Auto Head .095	219784		•	•					•	•	•	•
12' Line .095	219788		•	•					•	•	•	•
12' Line on Spool .095	219786		•	•					•	•	•	•
1-Lb. Bulk Line .095	216898-01		•	•					•	•	•	•
5-Lb. Bulk Line .095	216900-01		•	•					•	•	•	•
Spark Arrester Screen	219149	•	•	•					•	•	•	•
Air Filter	219145	•	•	•					•	•	•	•
Harness Kit	218201	•	•	•					•	•	•	•
Debris Shield Kit	217869	•	•	•					•	•	•	•
4-Tooth Weed/Grass Blade	218213				•							
3-Point Plastic Grass Blade	218212				•							
3-Point Plastic Blade/Guard Kit	218211				•							
Blade Guard Kit	218200				•							
8-Tooth Weed/Grass Blade	216513				•							
90-Tooth Metal Brush Blade	216514				•							

* ACCESSORIES ARE AVAILABLE AT YOUR NEAREST McCULLOCH SERVICING CENTER

FOR SERVICE-RELATED PROBLEMS,
REPAIR OR MAINTENANCE
TAKE YOUR UNIT TO THE NEAREST
AUTHORIZED McCULLOCH SERVICING
DEALER LISTED UNDER SAWS IN YOUR
TELEPHONE DIRECTORY YELLOW PAGES.

If additional assistance is required, call this toll-free hot-line:
(800) 423-6302
Arizona residents call collect (602) 465-8881